

# BLUPRINTS Windows Driver Installation Guide

## Driver Installation for USB

Please read and follow the following steps to install the Blueprints Windows POS-80/POS-58 Driver for all Models.

1. Utkarsh Ultra – Premium
2. Utkarsh Premium
3. Pragati Economy 2000
4. Pragati Regular
5. Sampann Regular 2600 \ 1200
6. Sampann Premium
7. Sampann Economy 1100

Download the driver by clicking on the link <https://blueprints.in/wp-content/uploads/2016/05/Windows-Driver-2inch.exe>

**NOTE :-** Before start, please make sure that the **printer is Turn On and connected with PC/ Laptop via USB.**

1. Download the driver, you can find **“Windows-Driver-2inch.exe “file in the download folder of windows (Typically downloaded files will be stored in Download folder).** Run **“Windows-Driver-2inch.exe “**and installation process will be started as shown in Figure 1.
2. Choose the language as English and click on OK button

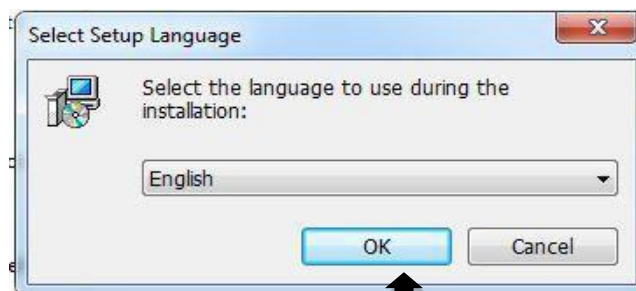


Figure: 1

# BLUPRINTS Windows Driver Installation Guide

3. “Setup – POS Series Printer Driver” window as shown in Figure 2 will be displayed. Click on “Next” button.

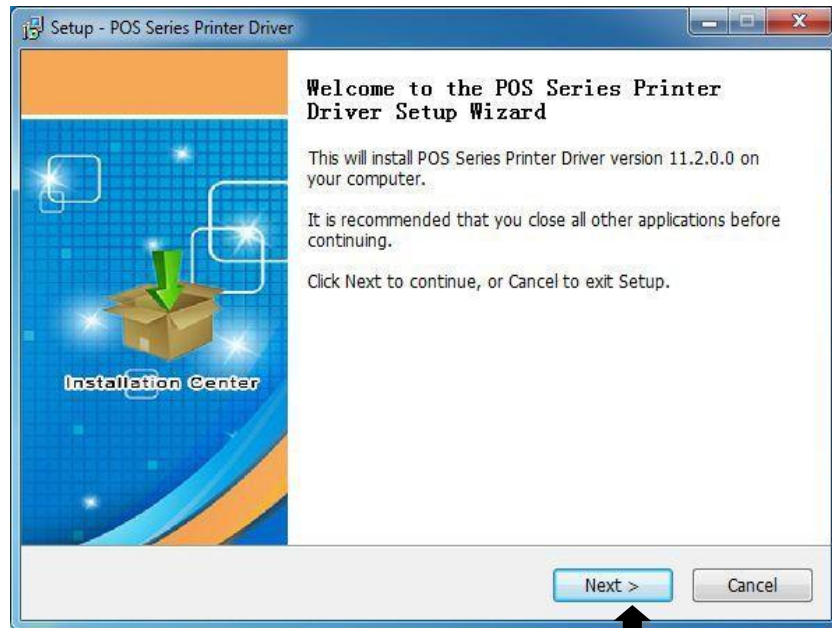


Figure: 2

4. In the next screen select “I accept the agreement” and click on “Next” button as shown in Figure 3.

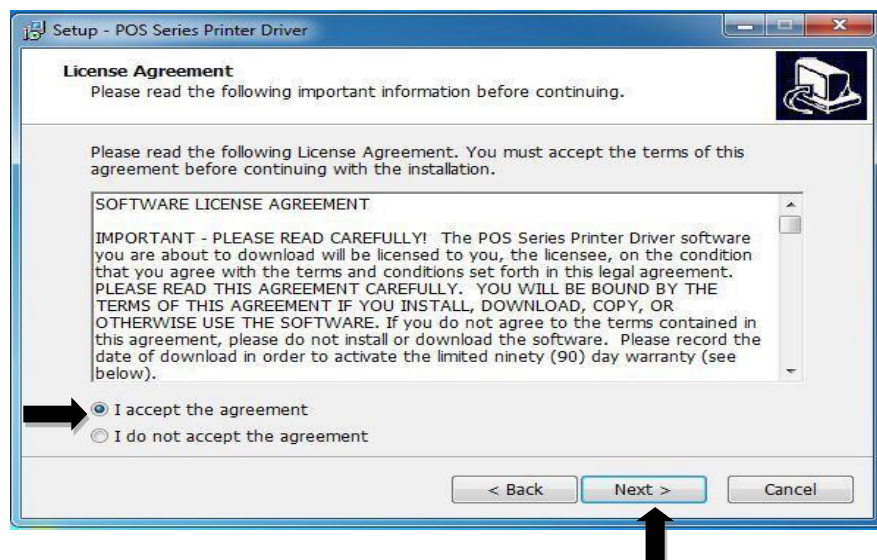


Figure:3

# BLUPRINTS Windows Driver Installation Guide

- Now choose the default path or browse the path where you want to save the driver installation files. Click on Next button.



Figure: 4

- Click on **"Install"** button as shown in Figure 5. The installation will start, if your PC/Laptop has any antivirus software, please allow this installation. For fresh installation Extra options may appear as shown in Figure 6 and Figure 7 follow the instruction to complete the installation process

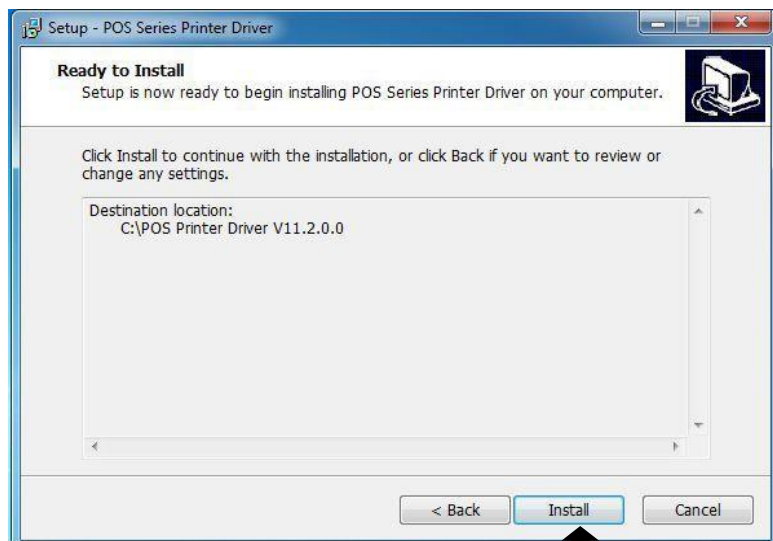


Figure: 5

# BLUPRINTS Windows Driver Installation Guide

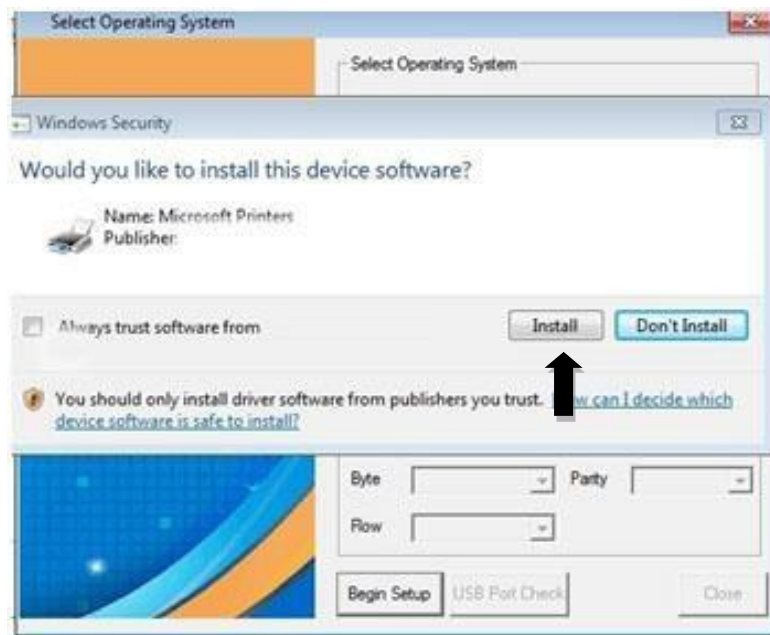


Figure: 6

7. Select "install this driver Software anyway"



Figure: 7

# BLUPRINTS Windows Driver Installation Guide

8. After the completion of the installation process printer configuration screen will be displayed. Follow the steps as describe in step A to step D.

Step A. Select the operation system of your system. If your system is running on Windows 10 and bellow, select appropriate operation system and for Windows 11 and above select Windows 10.

Step B. **Select printer as follows.**

For **Utkarsh AND Pragati series** of printer model select **Pos 80 Series Printer** and for **sampan series** printer model select **POS 58 Series printer**.

Step C. Click on **“USB Port Check”** to detect USB port number. Port number will be displayed at Ports and same may be print on printer also. Port Number shown in figure is indicative and it may be different at your system.

Step D. Click on **“Begin Setup”**, Printer setup window will be displayed as shown in Figure 8.

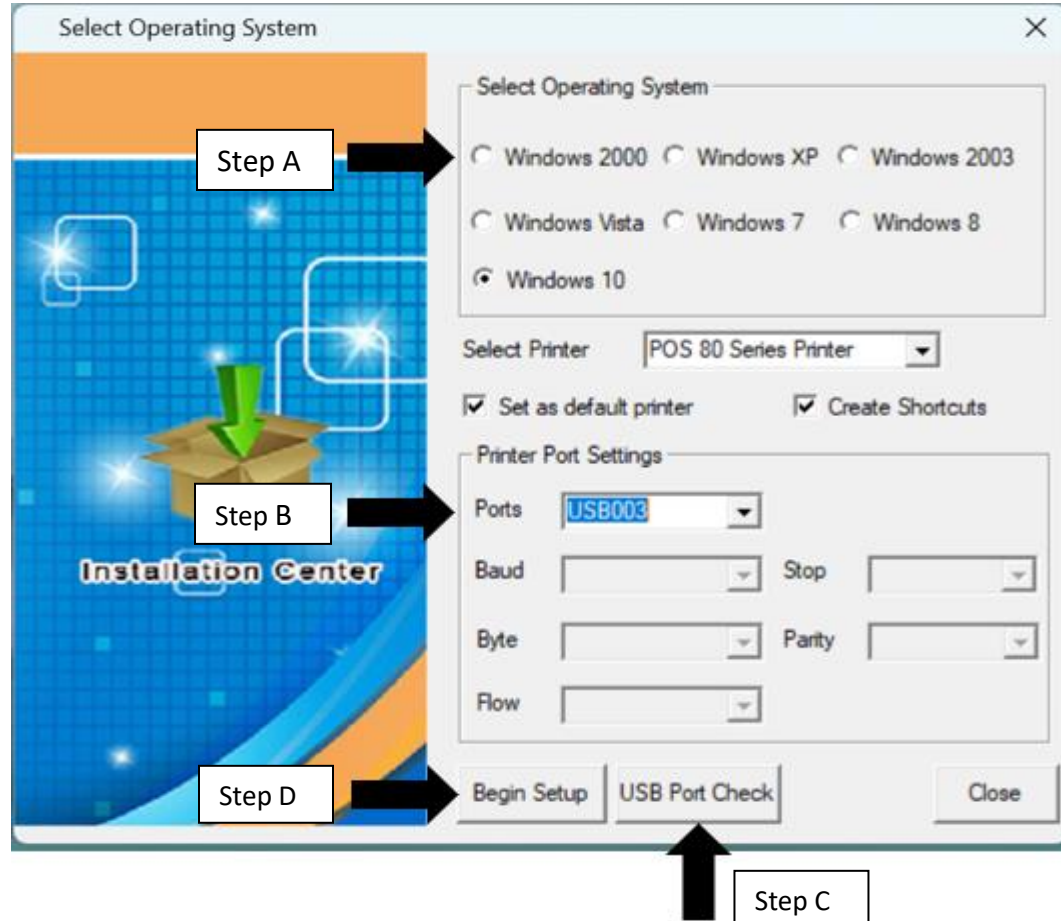


Figure 8

# BLUPRINTS Windows Driver Installation Guide

9. When installation gets finished, you can find the printer **"POS-80/POS-58"** in the control panel of your PC/laptop. In conventional option **"Print Test Page"** to verify installation.

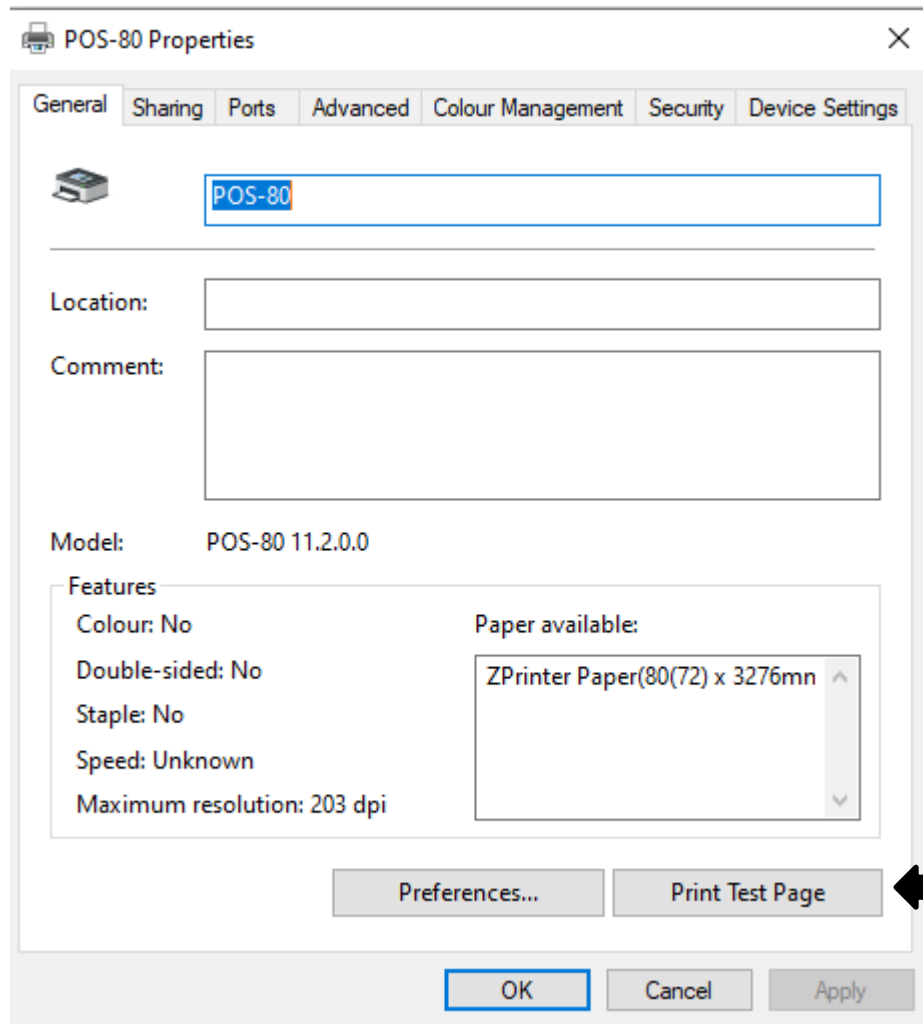


Figure 9



# BLUPRINTS Windows Driver Installation Guide

## Driver Installation for Bluetooth

**NOTE :-** Slide power on off switch to ON position to power on printer, GREEN led WILL BE TURN ON as shown in the Figure 1.



Figure 1

Step 1. The Bluetooth name of all printer models begins with **"BTprinter XXXXXX"** and the last 6 digits are the same as those in the model's serial number as shown in Figure 2.

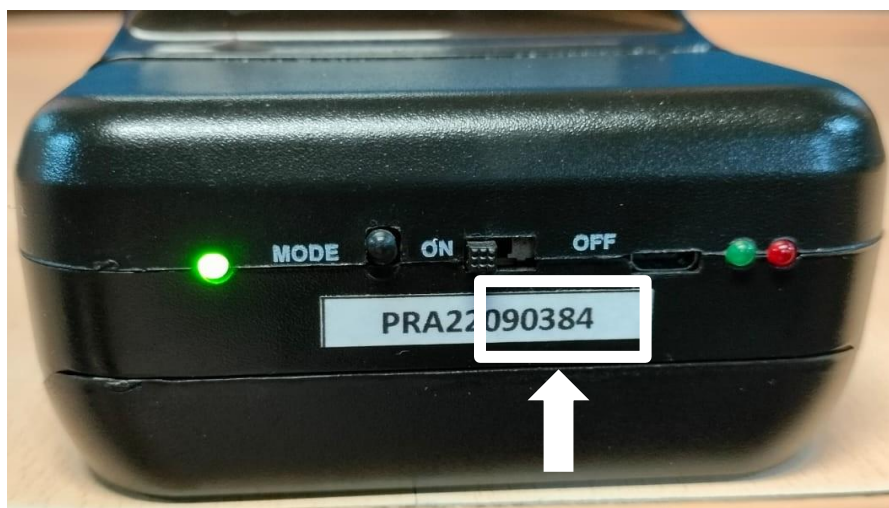


Figure 2

# BLUPRINTS Windows Driver Installation Guide

Step 2. In order to connect your printer successfully please follow the below steps

- First press and hold the **MODE\FEED button** of the printer, and then turn on the printer to print the self-test page.
- find out the “Printer name” of the self-test page as show in figure 3.

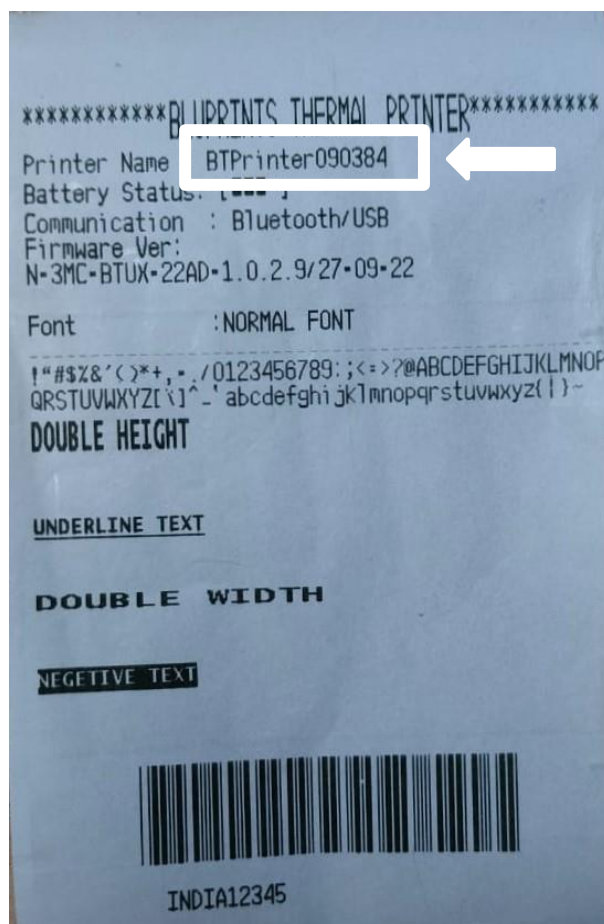


Figure 3



# BLUPRINTS Windows Driver Installation Guide

Step 3. Open **system setting** and click on **“Bluetooth and Devices”** then Click on **ADD device**

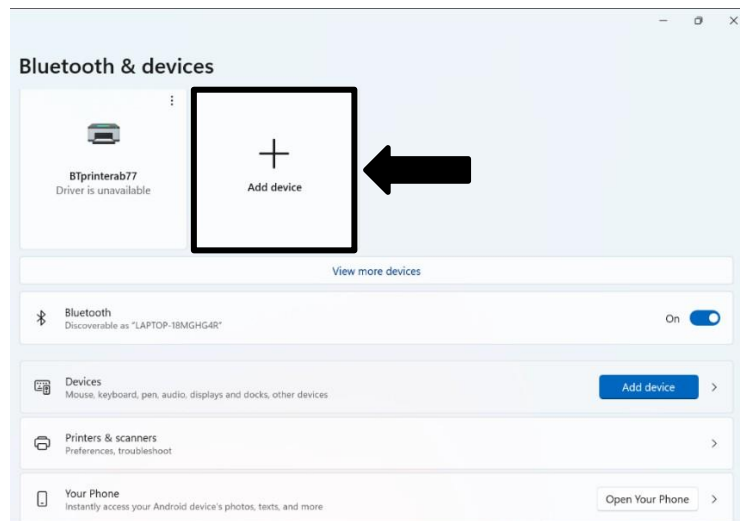


Figure 4

Step 4. Select Bluetooth.

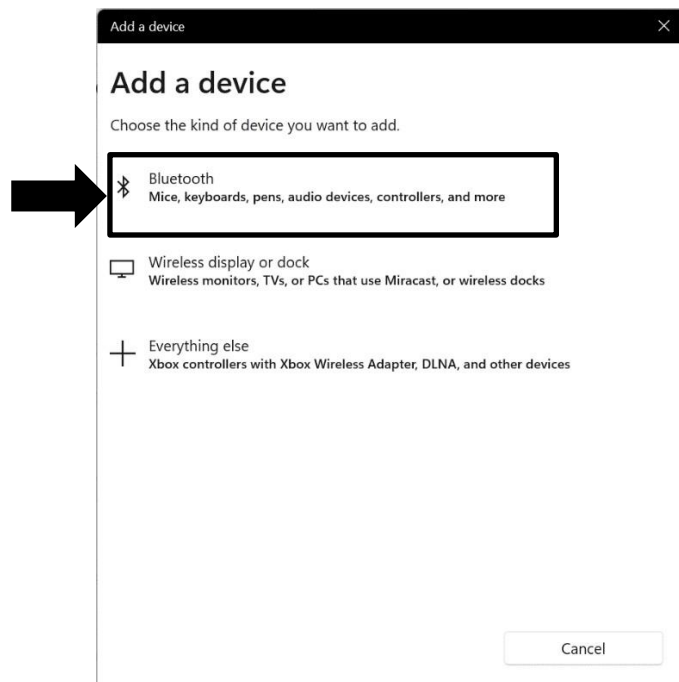


Figure 5

# BLUPRINTS Windows Driver Installation Guide

Step 5. Click on the printer you want to connect to your PC/Laptop and Search for the Bluetooth printer (**named: BTprinterXXXXXX**) as show in figure 6

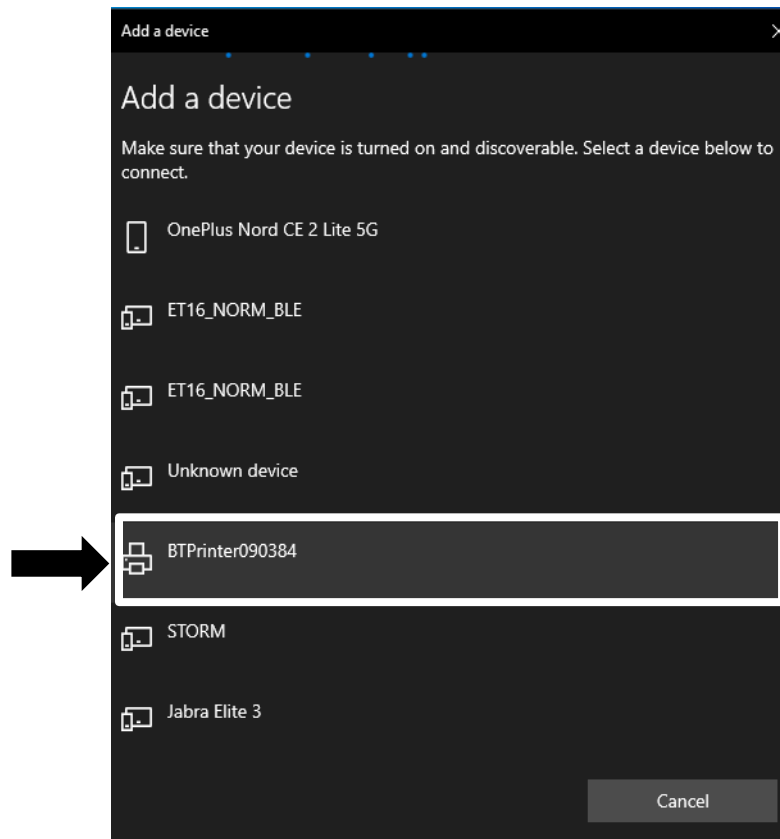


Figure 6

# BLUPRINTS Windows Driver Installation Guide

Step 6. Now the printer is pair to your PC\Laptop and press the **“Done button”** as show in figure 7

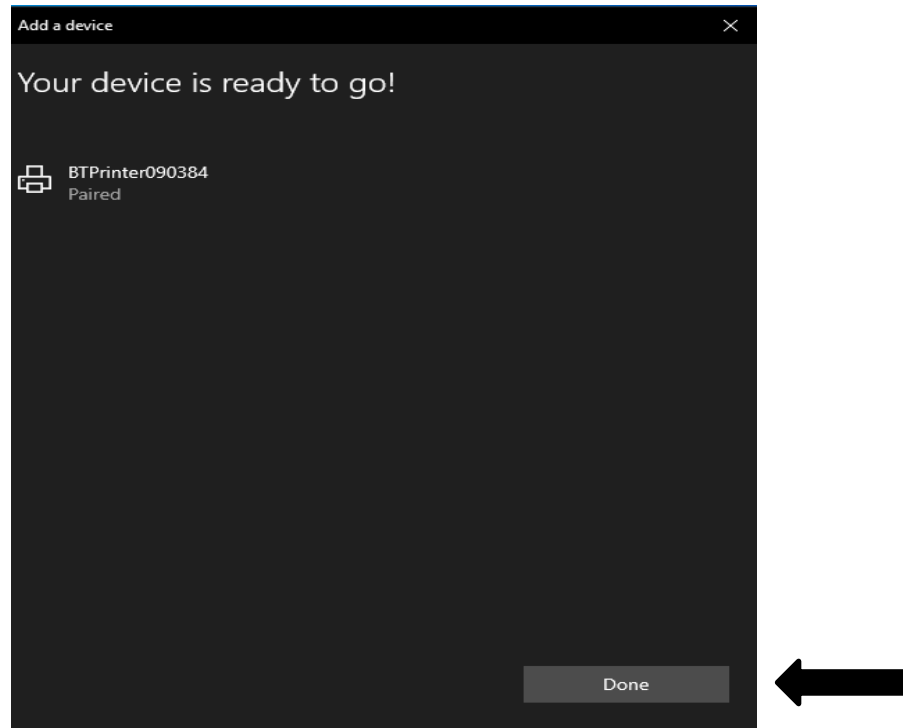


Figure 7

Step 7. Enter the PIN (**either 1234 or 0000**) if asked.

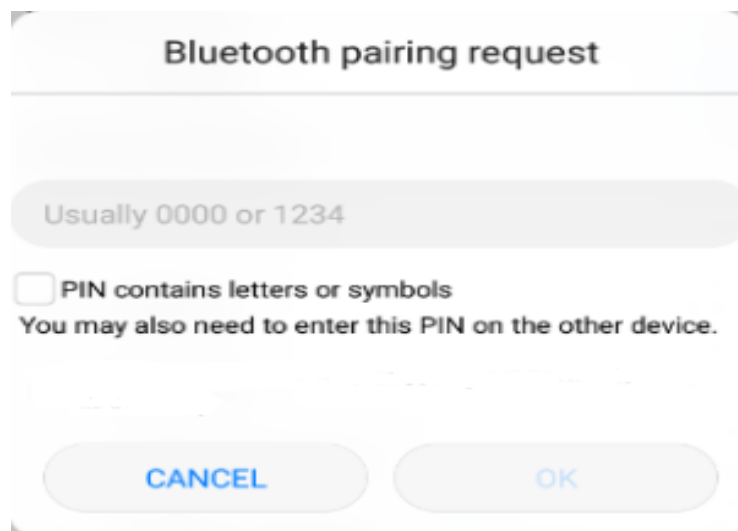


Figure 8

# BLUPRINTS Windows Driver Installation Guide

Step 8. Scroll down and click on **“More Bluetooth Settings”**.

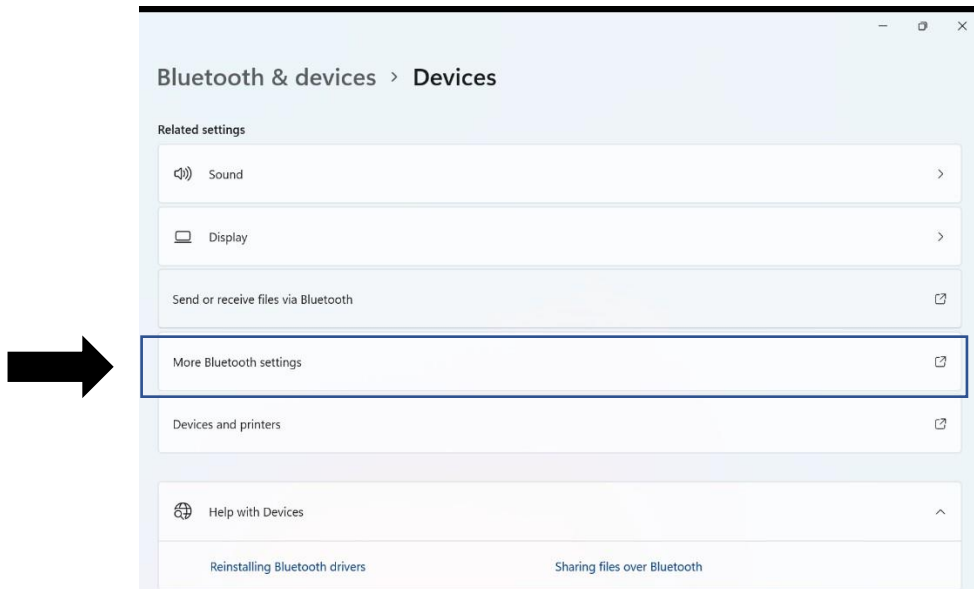


Figure 9

Step 9. In the Bluetooth settings window Note down **Outgoing (SPP Slave)** port number of your Printer Device.

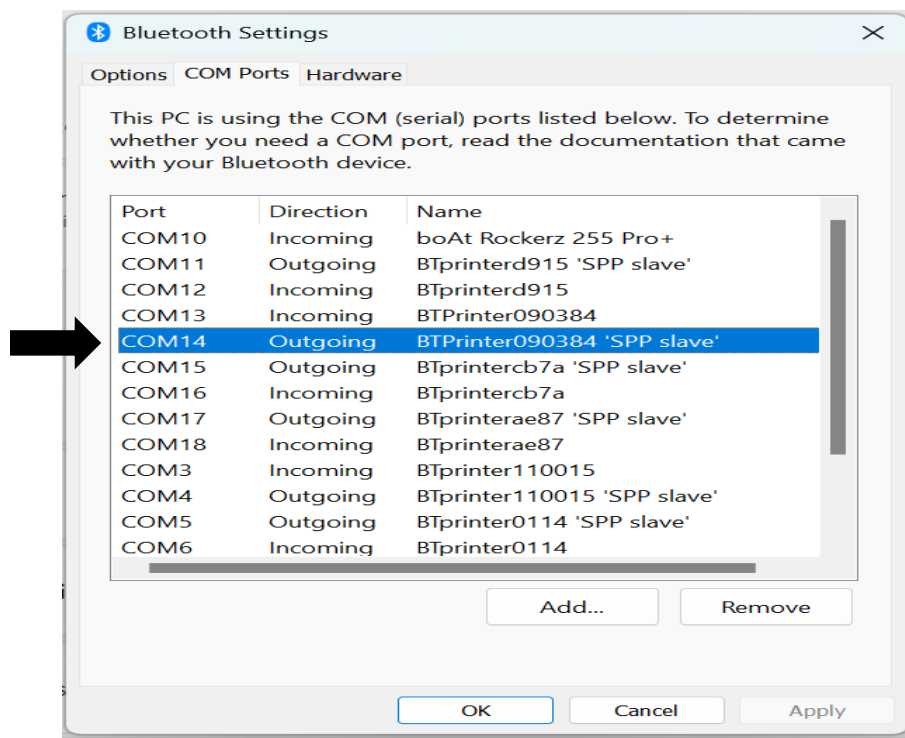


Figure 10

# BLUPRINTS Windows Driver Installation Guide

Step 10. Now open “**Windows-Driver-2inch.exe**” and installation process will be started

Step 11. Choose the language as **English** and click “OK” button as show in figure 12.

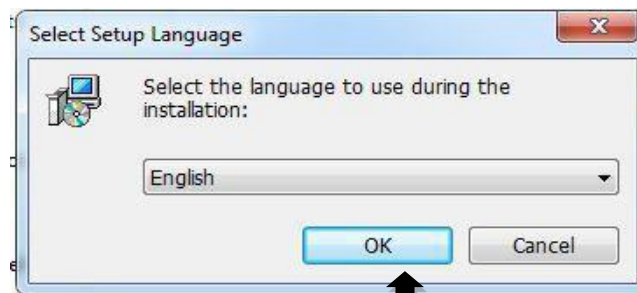


Figure: 12

Step 12. “Setup – POS Series Printer Driver” window as shown in Figure 13 will be displayed. Click on “Next” button.

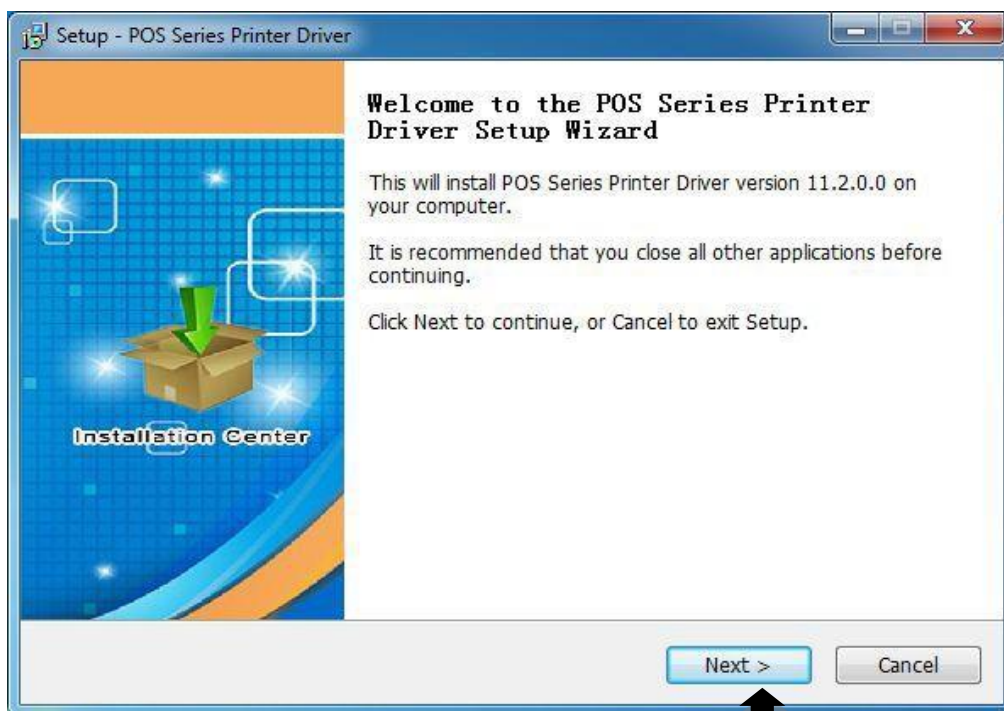


Figure: 13

# BLUPRINTS Windows Driver Installation Guide

Step 13. In the next screen select **“I accept the agreement”** and click on **“Next”** button as shown in Figure14.

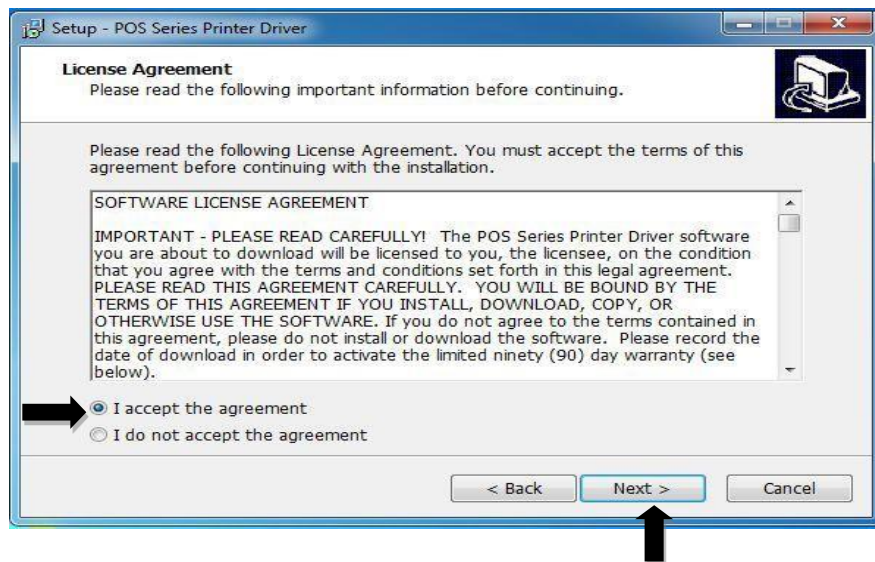


Figure14

Step 14 Now choose the default path or browse the path where you want to save the driver installation files. Click on Next button.



# BLUPRINTS Windows Driver Installation Guide

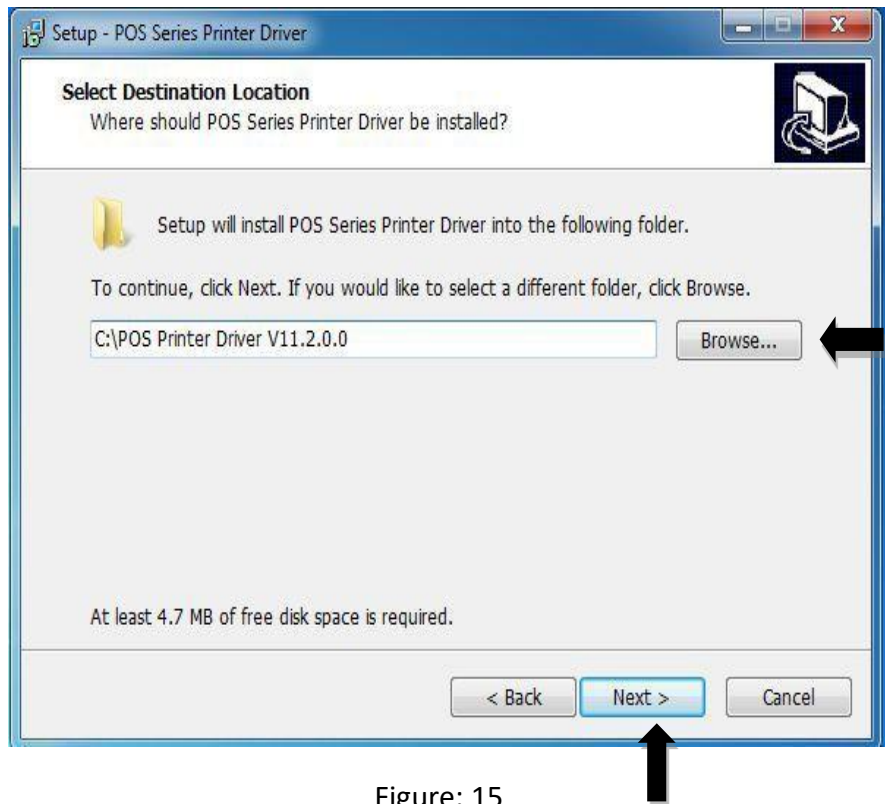


Figure: 15

Step 15. Click on **"Install"** button as shown in Figure 16. The installation will start, if your PC/Laptop has any antivirus software, please allow this installation. For fresh installation Extra options may appear as shown in Figure 17 and Figure 18 follow the instruction to complete the installation process

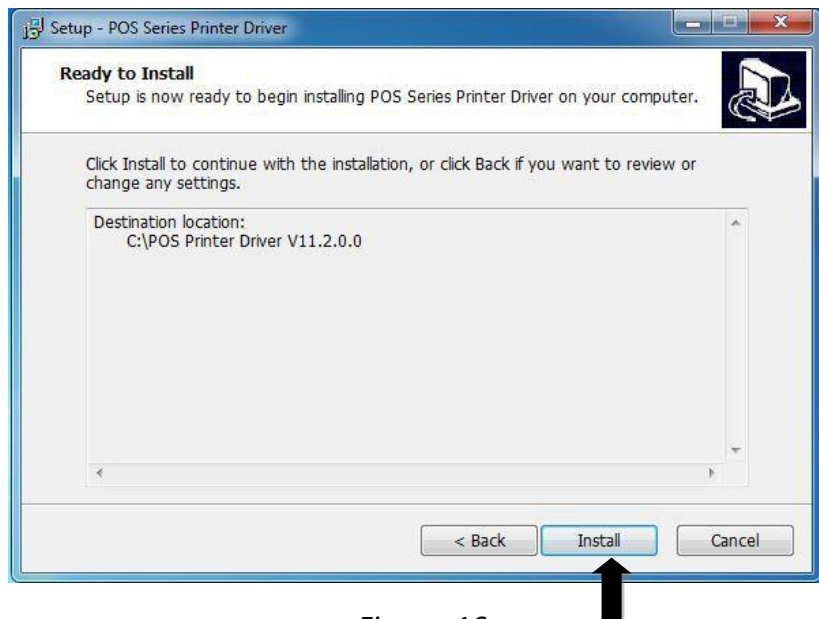


Figure: 16

# BLUPRINTS Windows Driver Installation Guide

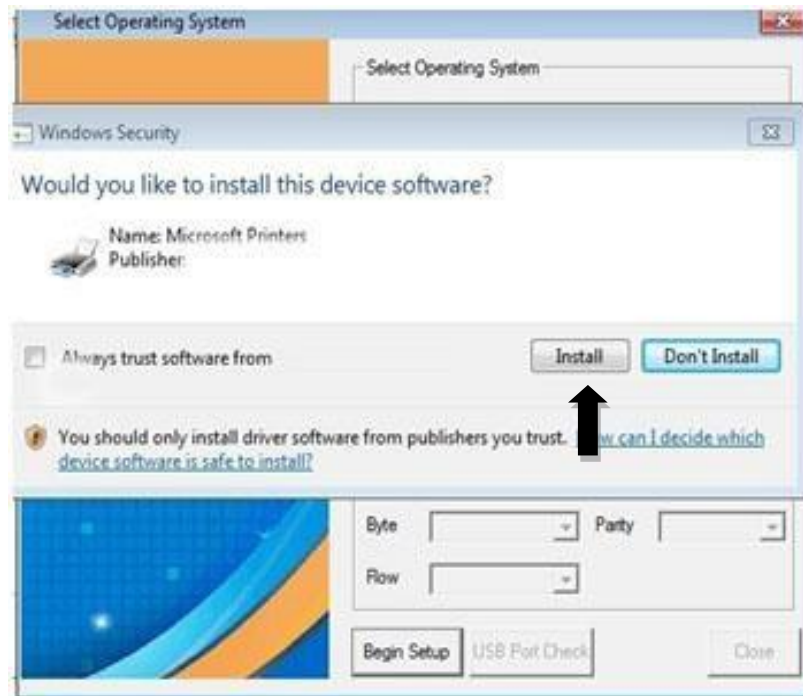


Figure 17

Step 16. Select **“install this driver Software anyway”**



Figure 18

# BLUPRINTS Windows Driver Installation Guide

Step 17. After the completion of the installation process printer configuration screen will be displayed. Follow the steps as describe in step A to step C

- Step A. Select the operating system of your PC/Laptop. If your system is running on Windows 10 and bellow select appropriate operating system and for Windows 11 and above select Windows 10.
- Step B. **Select printer as follows.**  
For **Utkarsh AND Pragati series** of printer model select **Pos 80 Series Printer** and for **sampan series** printer model select **POS 58 Series printer**.
- Step C. Click on “**Begin Setup**”, Printer setup window will be displayed as shown in Figure 19.

**NOTE :-** If you're setting up for Bluetooth connection, then do not click on "USB Port Button". And follow below step.

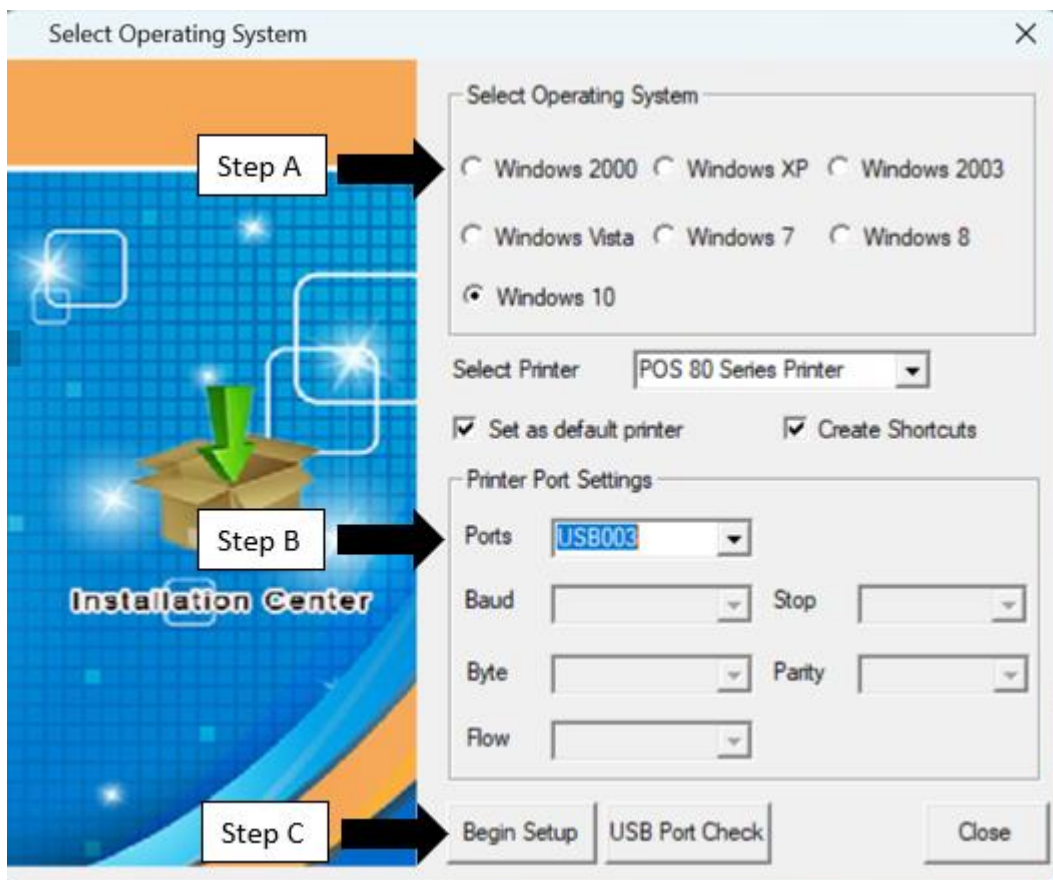


Figure 19

# BLUPRINTS Windows Driver Installation Guide

Step 18. When installation gets finished, you can find the printer “**POS-80/POS-58**” in the “**Devices and Printers**” of your PC/laptop as shown in Figure 20.

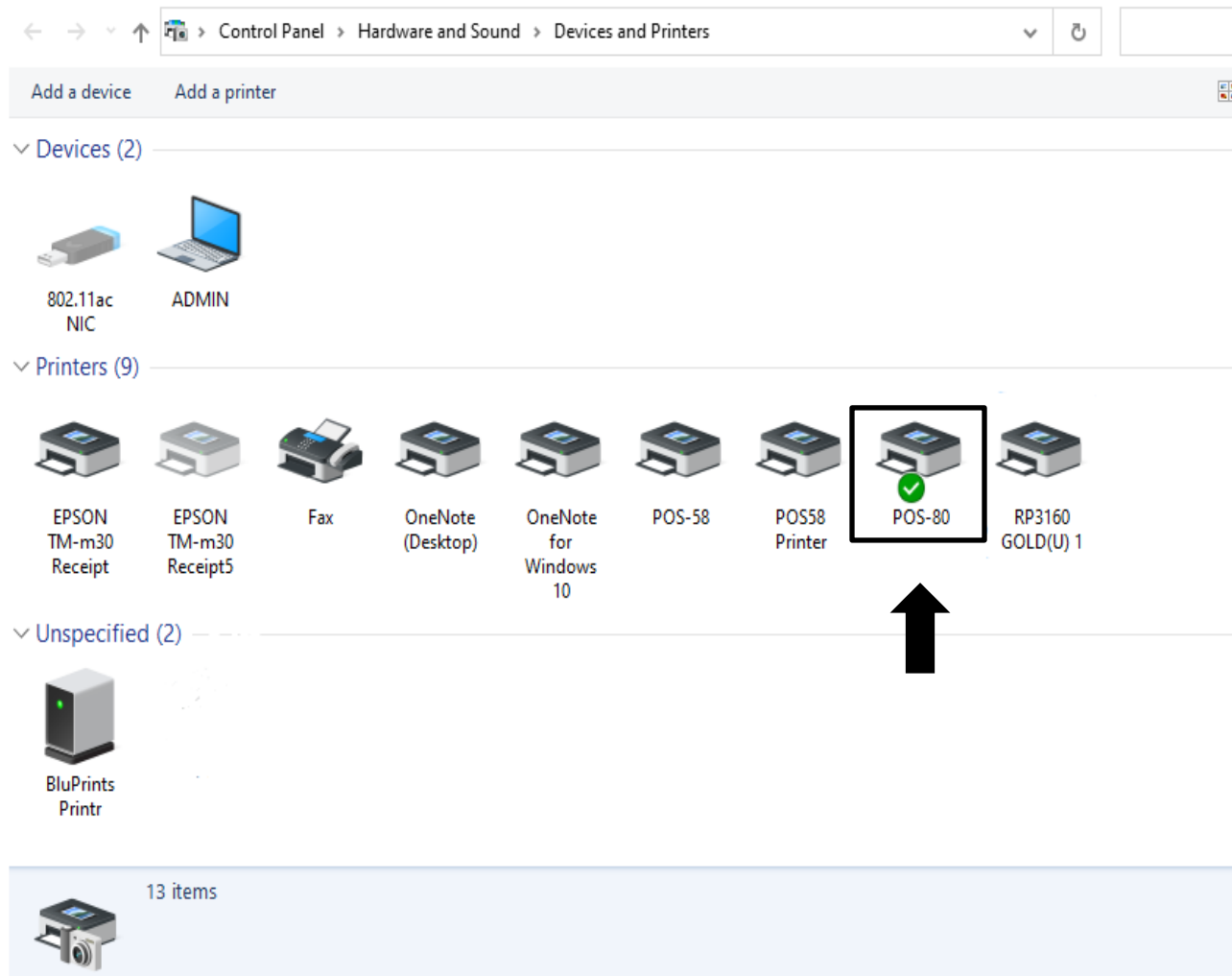


Figure 20

# BLUPRINTS Windows Driver Installation Guide

Step 19. Right-click on the **(POS-80)** driver icon, and select **"Printer Properties"**. See the picture as below

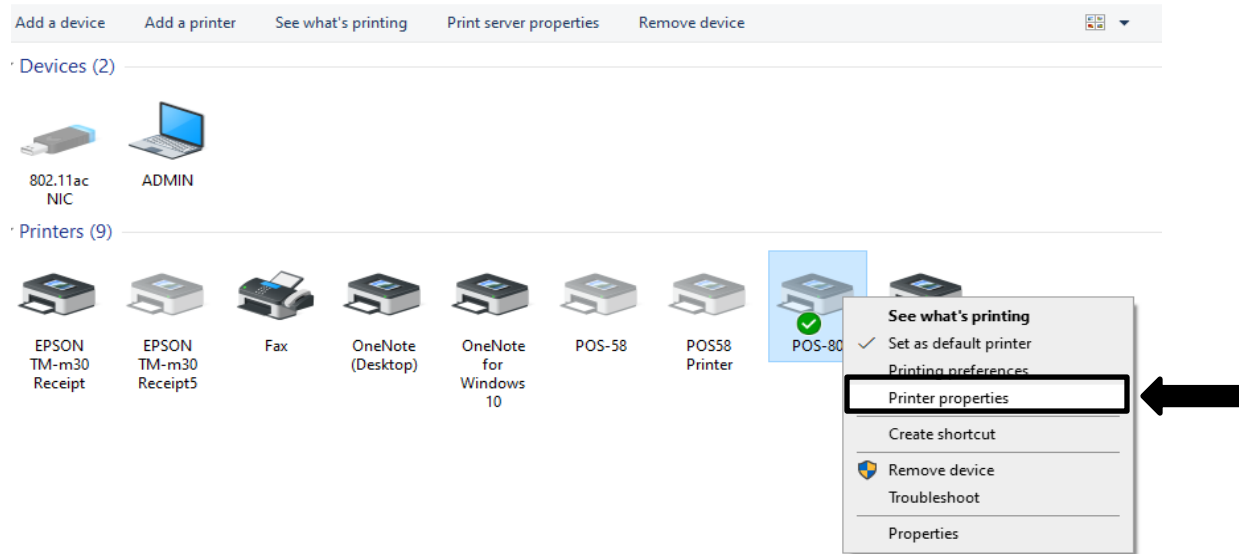


Figure 21

Step 20. A new screen will open, click on **"Port"** tab and select the outgoing **(SPP Slave)** port of your printer as shown in **Figure 10** and click on **"Apply Button"**.

# BLUPRINTS Windows Driver Installation Guide

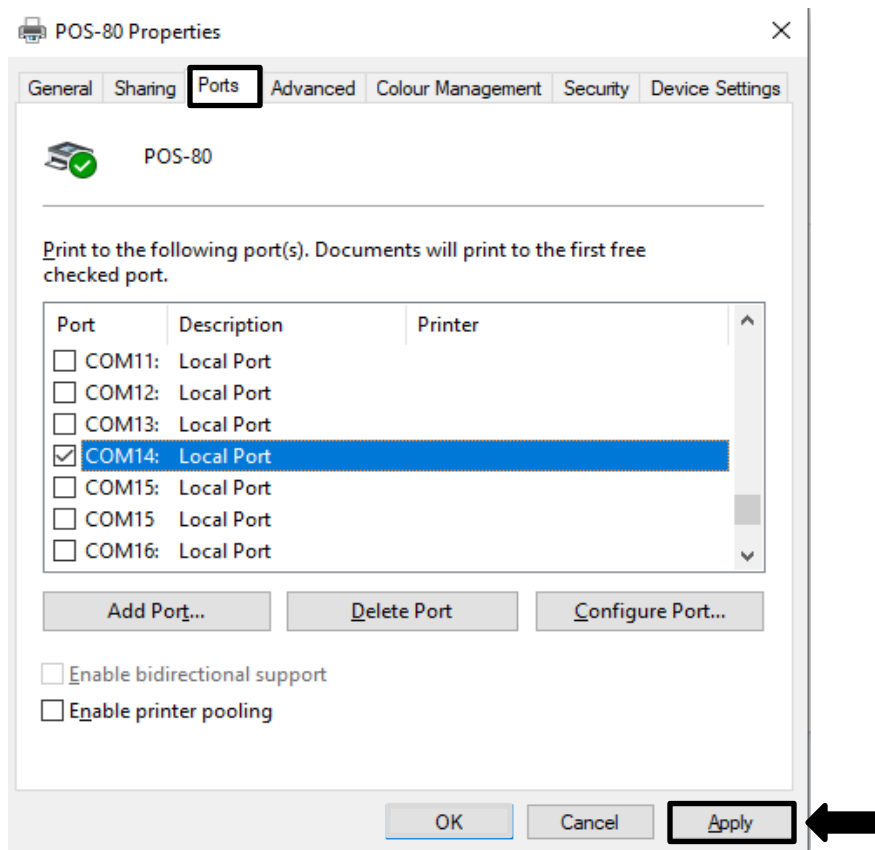


Figure 22

**NOTE :-** If you do not see your "Port Name" here, then learn how to create a port by going to figure no 24.

Step 21. When installation gets finished, again open the "**POS-80**" driver and click on "**Print Test Page**" to verify installation as shown in Figure 23.



# BLUPRINTS Windows Driver Installation Guide

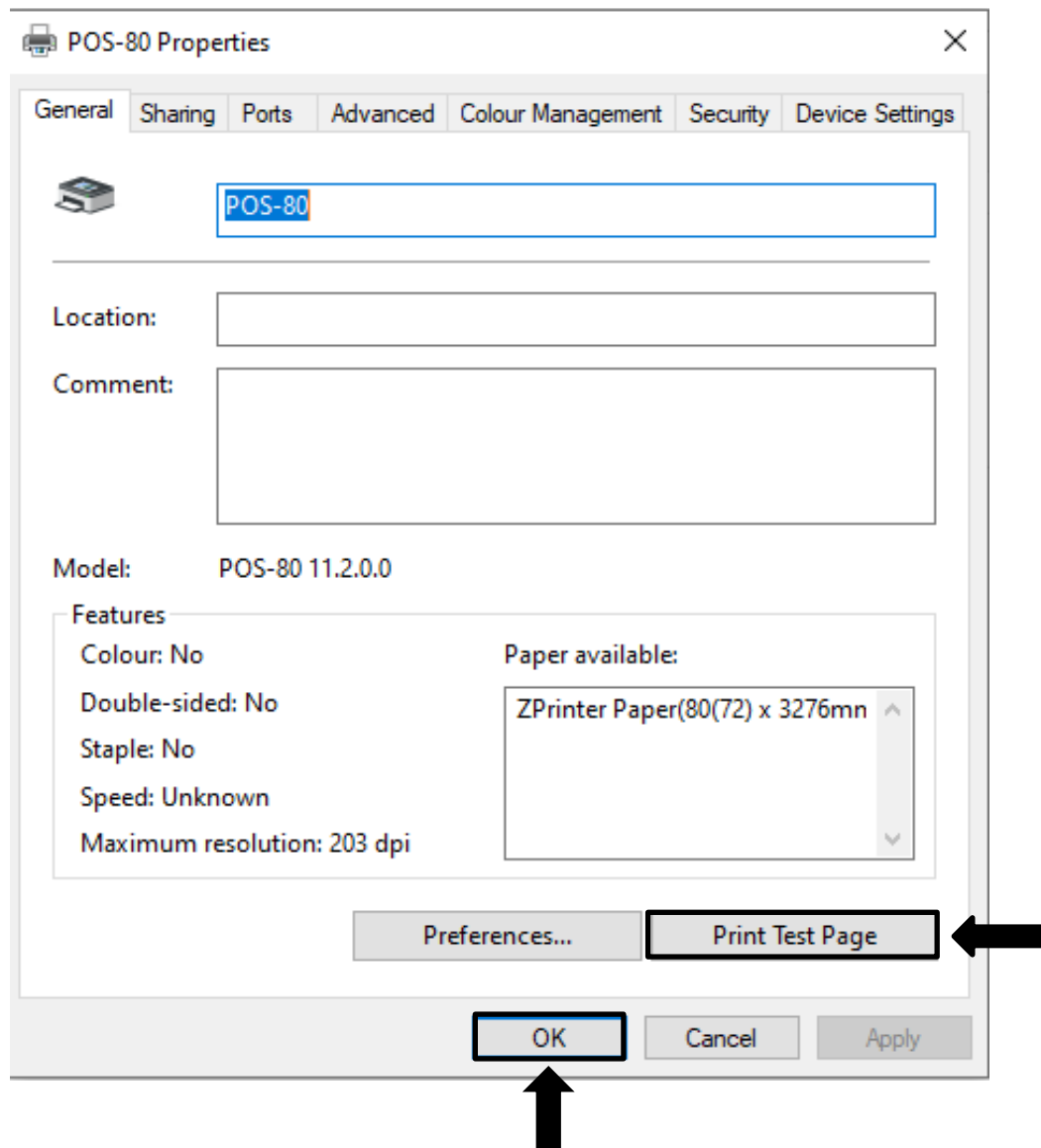


Figure 23

Step 22. For creating com port, open the **(POS-80)** driver in "**Devices and Printers**" and click on "**Port**" then click on "**Add Port**" as shown in figure 24.

# BLUPRINTS Windows Driver Installation Guide

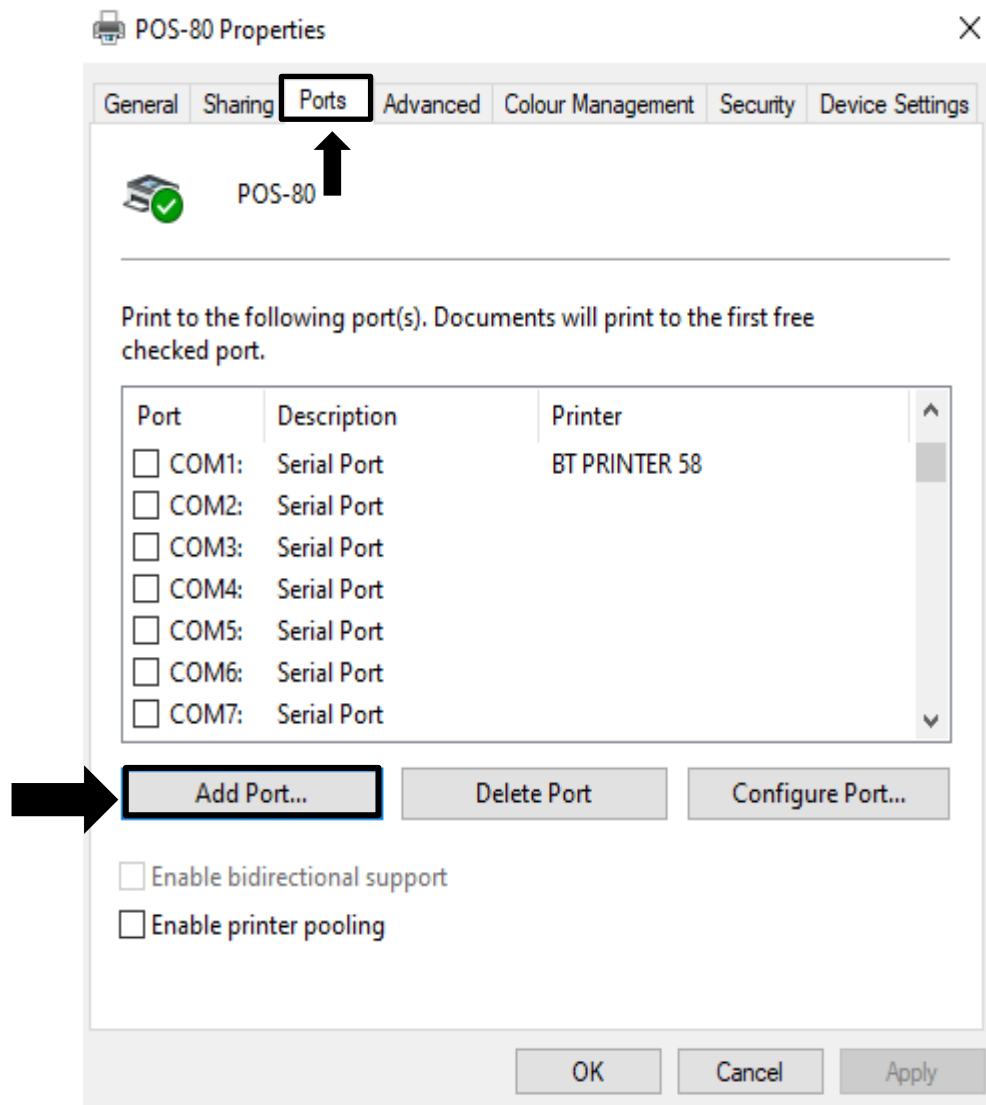


Figure 24

Step 23. In the next screen select **“Local Port”** and click on **“New Port”** button as shown in figure 25.

# BLUPRINTS Windows Driver Installation Guide

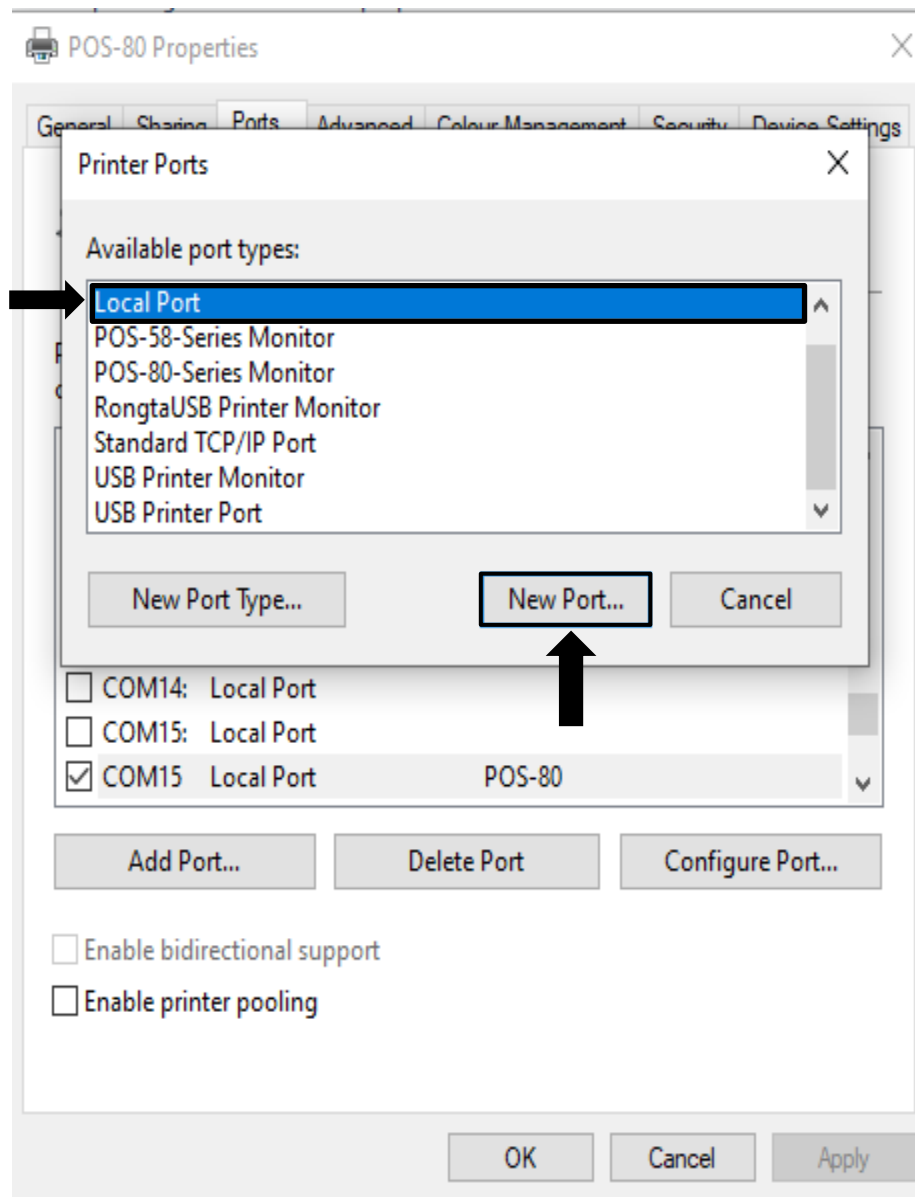


Figure 25

Step 24. Now enter the **"Port Name"** noted in step 9 then click on **"OK"** button as shown in figure 26.

# BLUPRINTS Windows Driver Installation Guide

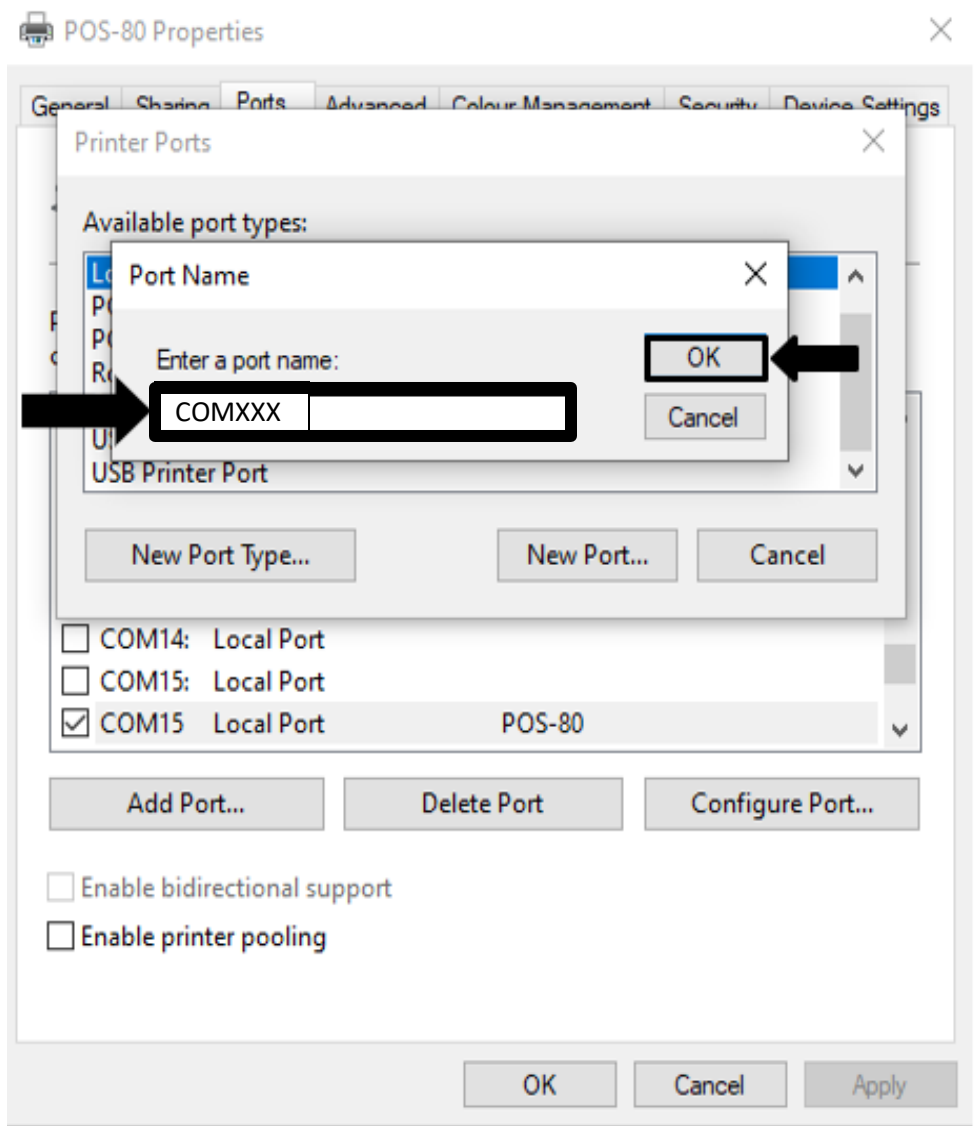


Figure 26